

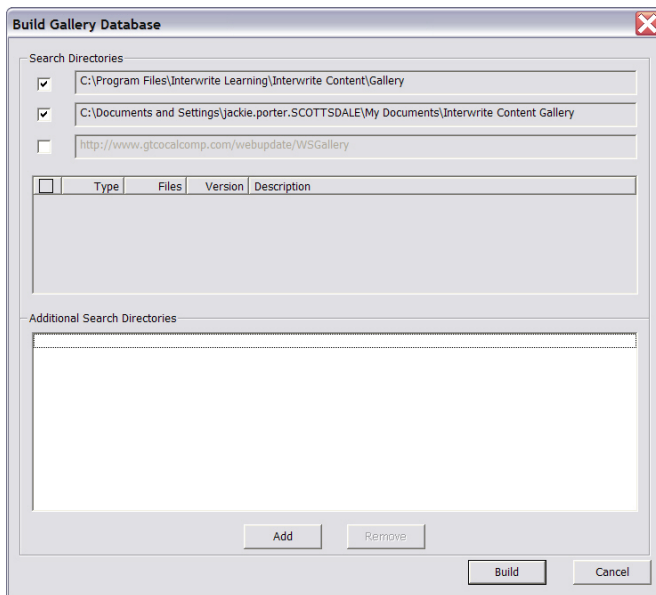
Moving My Gallery Images Into Workspace

Complete the following steps to move the images you placed in My Gallery to the latest version of Interwrite Workspace.

Moving Your Images

Make sure the latest version of Interwrite Workspace is installed on your machine.

- 1 Launch **Interwrite Workspace Interactive Mode**.
Workspace Interactive Mode opens.
- 2 Select **Gallery**.
The *Interwrite Gallery* opens.
- 3 In the **Gallery menu**, select **Build Gallery Database**.
The *Build Gallery Database* dialog box opens.

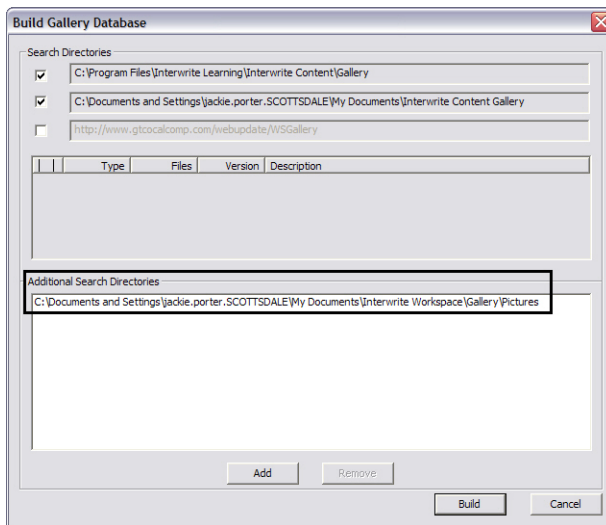


- 4 Click **Add**.
The *Browse for Folder* window opens.
- 5 Navigate to **My Documents/Interwrite Workspace/My Gallery/Pictures**.



6 Click **OK**.

The path for My Gallery Images is added to the *Additional Search Directories* field.



7 Click **Build**.

The Gallery is rebuilt, including the images created in previous versions of Interwrite Workspace.

