



# ExamView Quick Step Guide

## Take a LAN Test in ExamView Test Player with a Class Roster

When taking a test with a class roster, it is important to enter the correct student ID that is listed in the Test Manager. If the student does not enter the correct ID, they will not be able to open the test.

Additionally, tests taken with a class roster do not support the ability to recalculate questions between each attempt. This is done to keep the problems the same for all students. Questions can still be automatically scrambled amongst the students.

Other than these few differences, the process is exactly the same as listed in "Take a LAN Test in ExamView Test Player WITHOUT a Class Roster".

This section is repeated below for your convenience.





# ExamView Quick Step Guide

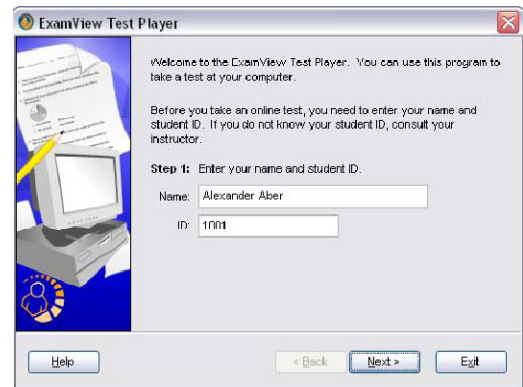
## Take a LAN Test in ExamView Test Player without a Class Roster

For tests that you administer on your LAN, students must use the **Exam View** Test Player to take the test. Before your students can take the test, make sure that the program is installed on your network and that students have read/write (full) access to the folder where the test is located.

You can include any question type (multiple choice, true/false, numeric response, completion, essay, etc.) on an online test. The program automatically scores any objective (e.g., multiple choice), completion, or numeric response questions. You must manually score any open-ended (e.g., essay) questions as described in the next section—*Get Results from a LAN Test*.

*To take an online test...*

1. Start the **Exam View Test Player** program.
2. Enter the student name and ID. Click the **Next** button to continue.
3. Select the test and click the **Next** button.
4. If you do not see the test listed, click the Folder button to change the location. The program will show only those tests that the student may access. For example, if you set a date range when the test is available, you will not see the test if the current date is not in that range.
5. Review the test information and click the **Start** button to begin the test.
6. The **Exam View Test Player** displays one question at a time. Students can answer a question by clicking the radio buttons, clicking the choice buttons, or by typing a response.



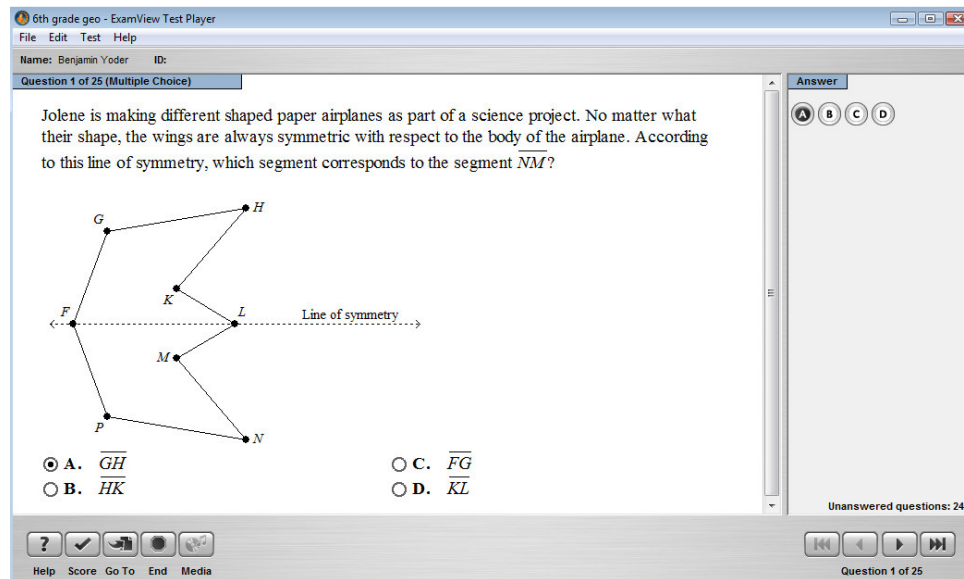
*Test Player welcome screen*





# ExamView Quick Step Guide

## ExamView Test Player Window



ExamView Test Player window

Most of the button functions are also accessible by using menu options or keyboard shortcuts. A summary of the button controls are shown below.



**Help:** Launch the program Help topics.



**Score:** When active, this button allows you to check your answer.



**Go To:** Navigate to a different, specific question.



**End:** End the test.



**Media:** Play a multimedia link. This option is only available when media is associated with a question.



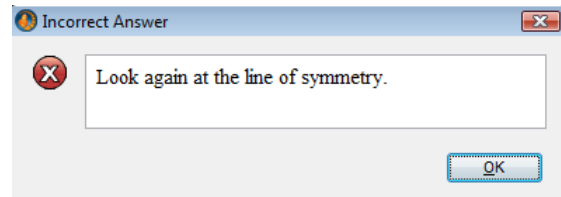
**Question Navigation Strip:** Use this menu to advance to the first, previous, next, or last question on the test.



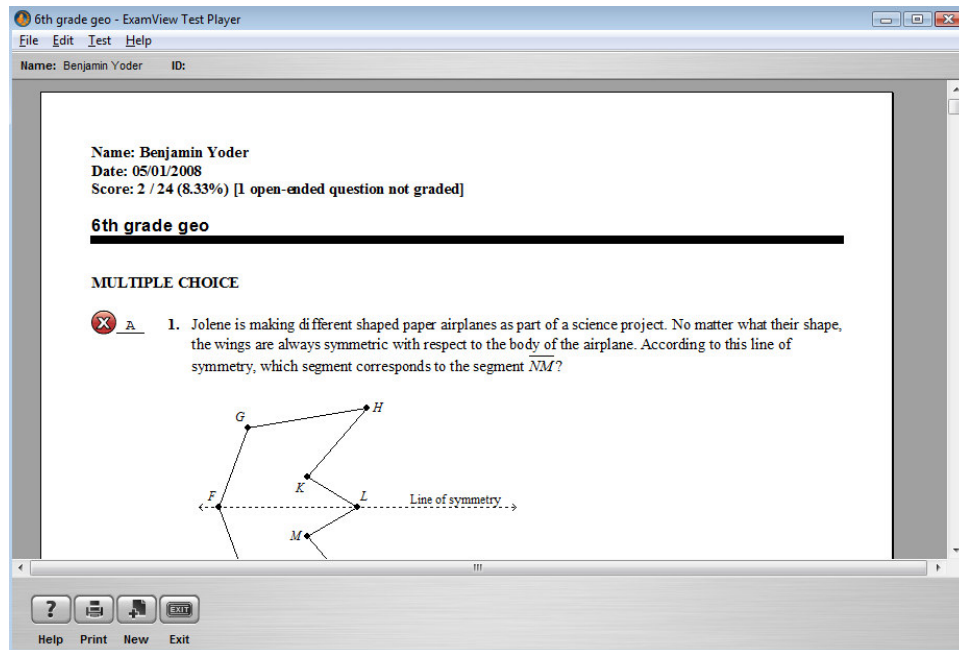


## ExamView Quick Step Guide

- Respond to each question. If enabled, click the **Score** button to display **feedback** for the selected answer (see module 2 for adding feedback to a question).
- Click the **End** button when you are finished.
- Depending on the reporting options you set, a report will appear.



*Feedback prompt*



*Test Score window*

- If enabled, click the **Print** button to create a hardcopy of the results.
- Click the **Exit** button to quit the program, or click the **New** button to start a new test.

