



ExamView Quick Step Guide

Publish Tests to ANGEL Using Test Generator (Windows Only)

Using *Exam View* you can publish or export tests to ANGEL.

Publishing allows you to push content from *Exam View* directly to the server. Use with Angel 6.3. *Exporting* involves saving a file and uploading it to ANGEL through the browser. Use the export feature with ANGEL 7.1 or newer.

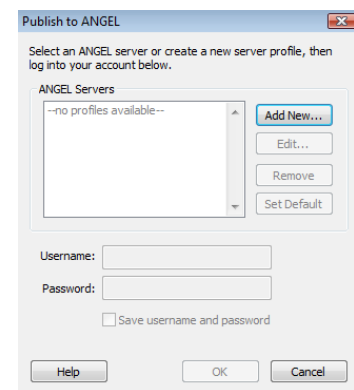
These two options give you the flexibility to create tests in *Exam View* and then deliver them online using ANGEL.

Create ANGEL Server Profile

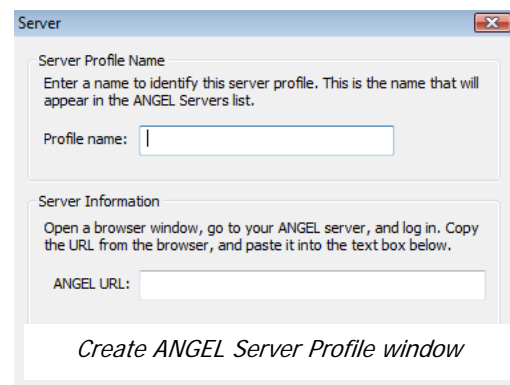
1. Build or open a test in **Exam View Test Generator**.

Note: ANGEL does not support all of the *Exam View* question types. For details, look up "ANGEL question support" in the Test Generator help file.

2. Choose **File > Publish To > ANGEL**. The Publish to ANGEL window appears.
3. Click **Add New...** to create a server new profile. The server profile will remember the ANGEL site URL. The Create ANGEL Server Profile window appears.
4. **Type your profile name** into the Profile name text box.
5. Copy and Paste the **ANGEL URL** in the ANGEL URL text box.
6. Click the **OK** button. *Note:* If necessary, enter your **username** and **password**.
7. Check the **Save username and password** check box to automatically fill in the username and password the next time a test is published.
8. Click the **OK** button. The Publish to Angel window will appear.



ANGEL Server Profile window



Create ANGEL Server Profile window



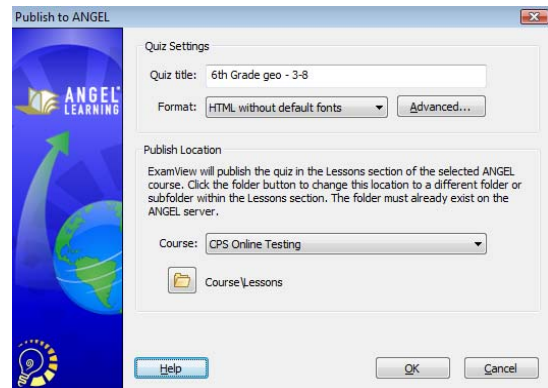


ExamView Quick Step Guide

Publish to ANGEL

1. Enter a quiz title for the content.
2. Choose one of three formatting options for the HTML that is uploaded to the ANGEL server. The best option to choose will depend on the type of formatting required by the questions in your test or question bank. The three options are:

- **HTML** -- Maintains as much formatting as possible. Supports fonts, tables, images, etc.
- **HTML without any fonts** -- Maintains all formatting except font face and size settings. The font used to display each question will depend on the settings specified by ANGEL and/or your browser.
- **HTML without default fonts** -- This is a combination of the first two options. With this option, **Exam View** does not set the initial font unless you set a new font other than the default font.

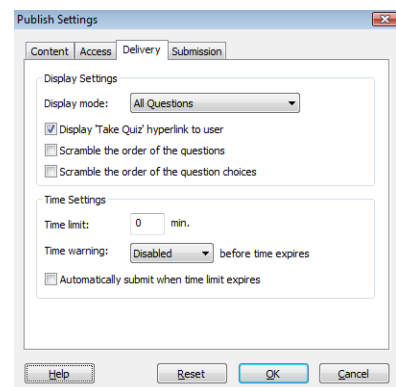


Publish to ANGEL window

3. Using the pull-down list, specify the ANGEL course where the content should be published.

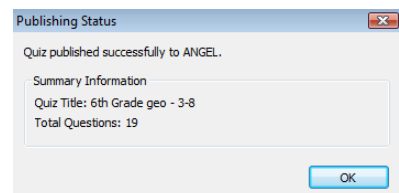
Note: If you do not see your course in the list, verify that the server and user account information is correct and active.

4. (Optional) Specify a publish location within the Lessons area of the ANGEL server. Click the folder icon button to change this location.
5. (Optional) Complete additional ANGEL publishing settings by clicking the **Advanced...** button. The Publish Settings window will appear. Use these tabs to set advanced options such as scrambling, time limits, max number of attempts, etc. To learn more about the available settings, click the **Help** button in the Publish Settings window.



Publish Setup window

6. Click the **OK** button. The Publish Status window will appear after the test has been successfully published to ANGEL.



Publishing Status window

Note: You can also publish just the test results from Test Manager directly to ANGEL.

